

SEASCAPE

RASHID YACHTS & MARINA

Rashid Yachts & Marina Project Brochure



SEASCAPE

RASHID YACHTS & MARINA

Seascape is a residential project of four buildings in the Rashid Yachts & Marina area.

+971 (4) 245-6588



SEASCAPE

RASHID YACHTS & MARINA

Quick access to the main road

Seascape is a 10-minute drive from Sheikh Zayed Road and a 15-minute drive from Dubai International Airport and Al Maktoum International Airport. Downtown Dubai and Business Bay are an 18-minute drive away. Dubai Mall, Burj Khalifa and Dubai Creek Harbor are within a 20-minute drive.

SEAGATE

SEASCAPE

1 MARINA, PROMENADE
& DUBAI MALL BY THE SEA

2 THE CANAL POOL

3 QE2

4 HOSPITALITY ON THE WATER

5 FOUNDER'S HOUSE

6 PEDESTRIAN BRIDGE

7 THE MUSEUM

8 FLOATING RESTAURANTS

9 MARINA / YACHT BERTHS

10 THE THEATRE

11 FERRY STATION

12 BOUTIQUE HOTEL

13 PRIVATE BEACH CLUB

+971 (4) 245-6588

SEASCAPE

RASHID YACHTS & MARINA

Area on the coast



Rashid Yachts & Marina is a marina area on the coast of the Arabian Gulf with coastal architecture, equipped for yacht owners. The atmosphere of resort life by the sea reigns on the territory, and a variety of shops, cozy cafes and gourmet restaurants will surround you with convenience for solving daily tasks.

+971 (4) 245-6588



SEASCAPE

RASHID YACHTS & MARINA

green roof

white and gray panels

Coastal architecture

The modern architecture of the buildings reflects the coastal location of the complex - the geometry of the buildings resembles coral reefs, and the white and gray-beige facades refer to the elegant yachts on the coast.

+971 (4) 245-6588

SEASCAPE

BASHID YACHTS & MARINA

The lobby is filled with natural light, inside there is a reception desk and a seating area



+971 (4) 245-6588

SEASCAPE

RASHID YACHTS & MARINA



Apartments and townhouses

Seascape is home to a collection of premium 1, 2 and 3 bedroom townhouses and apartments, steps away from the marina, waterfront and Dubai's longest canal pool.



+971 (4) 245-6588

SEASCAPE

RASHID YACHTS & MARINA

Marine style finish

Inside the housing, a detailed balanced color scheme - modern interiors are made in neutral beige tones with accents in a marine theme.



+971 (4) 245-6588

Beige bathroom

The bathrooms are tiled with large-format beige tiles, and the vanity top is finished with beige stone.

SEASCAPE

RASHID YACHTS & MARINA

+971 (4) 245-6588



Panoramic windows

The open floor plan and panoramic windows allow you to enjoy endless views of the surroundings, the sea surface, as well as the Burj Khalifa tower.

SEASCAPE

RASHID YACHT CLUB MARINA

+971 (4) 245-6588

Spacious balconies

Meet the dawn on your own equipped balcony with views of the bay with snow-white yachts and the endless expanse of the sea.

SEASCAPE

RASHID YACHTS & MARINA

+971 (4) 245-6588



SEASCAPE

RASHID YACHTS & MARINA

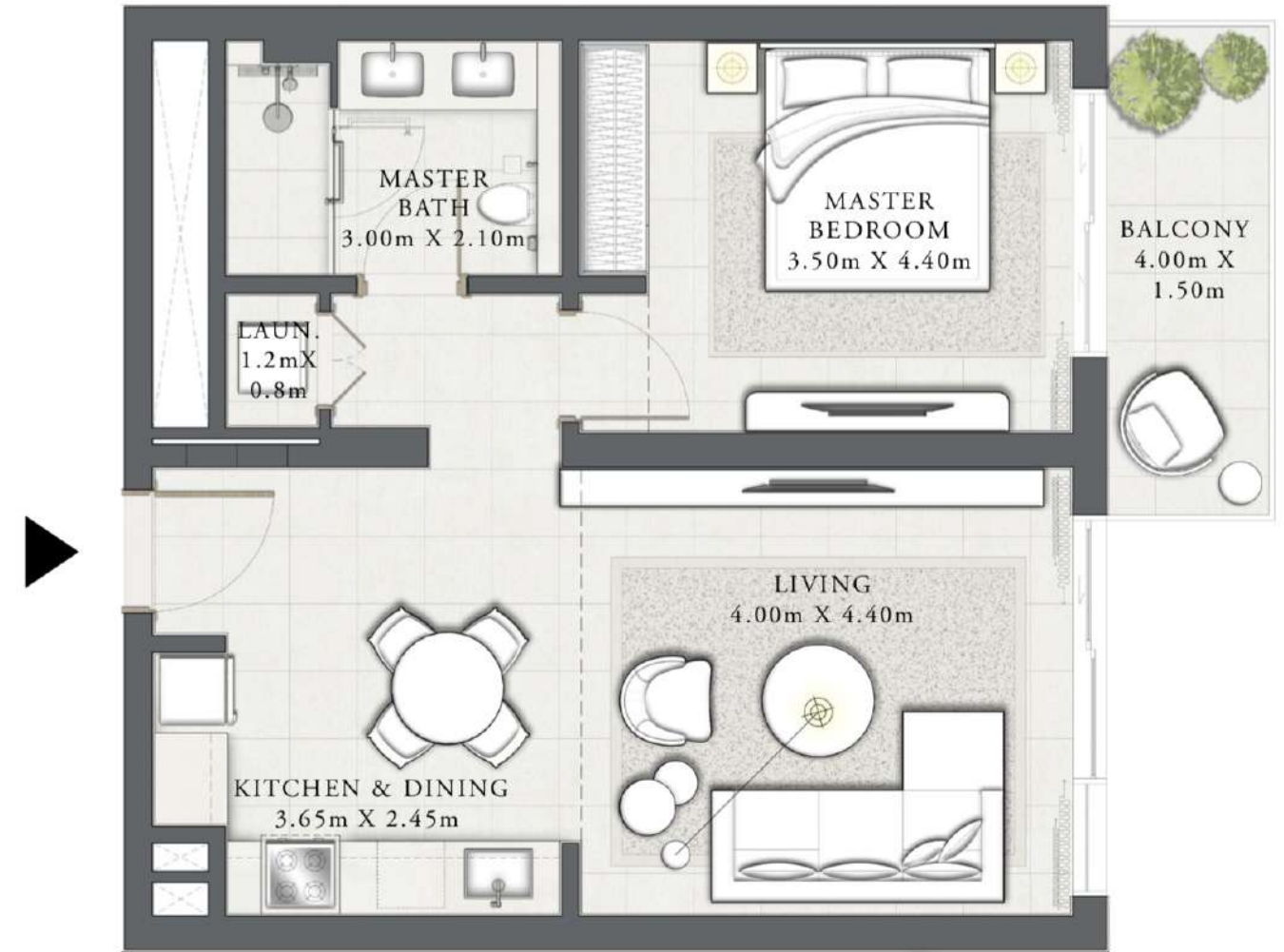
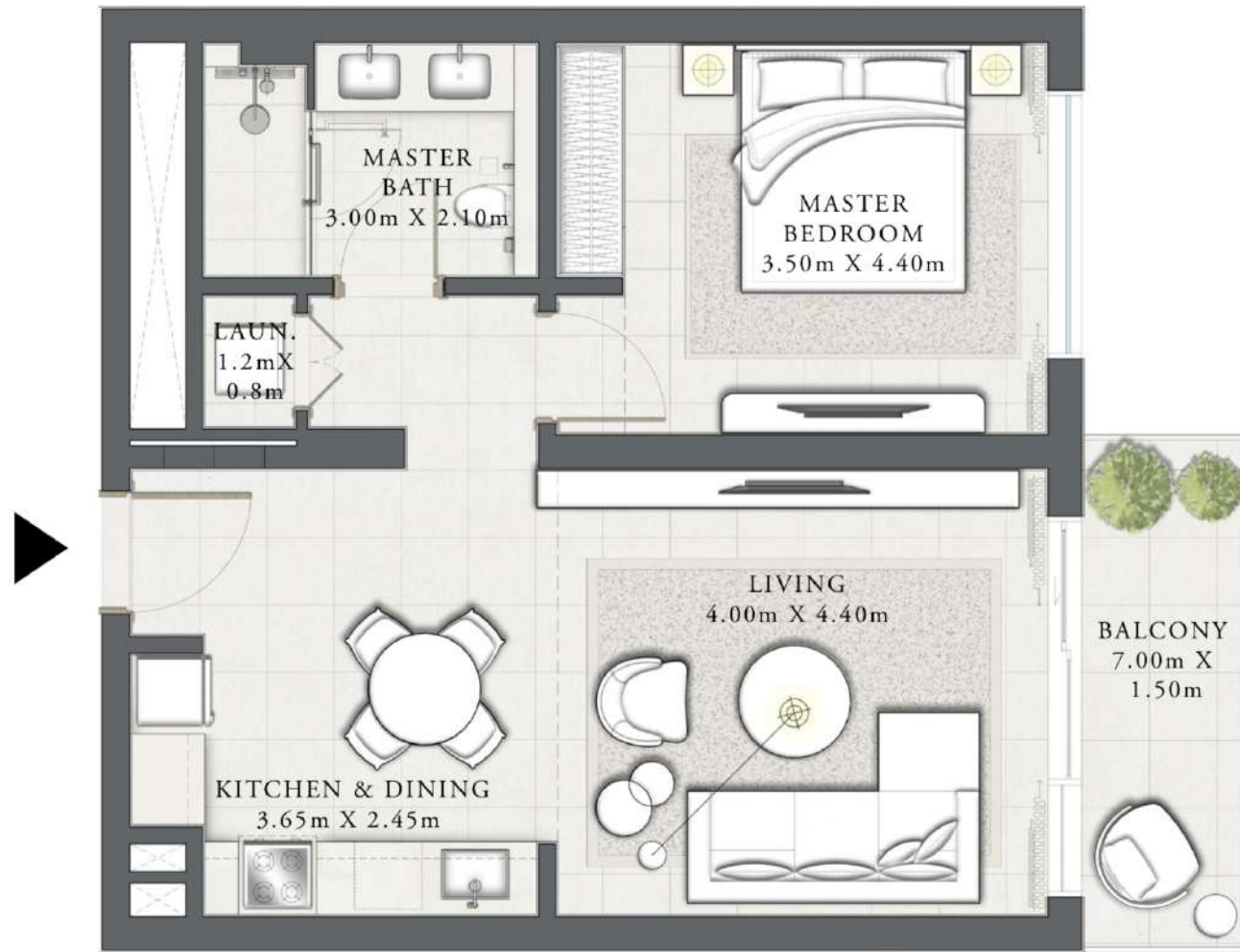


Views from the balcony of the project

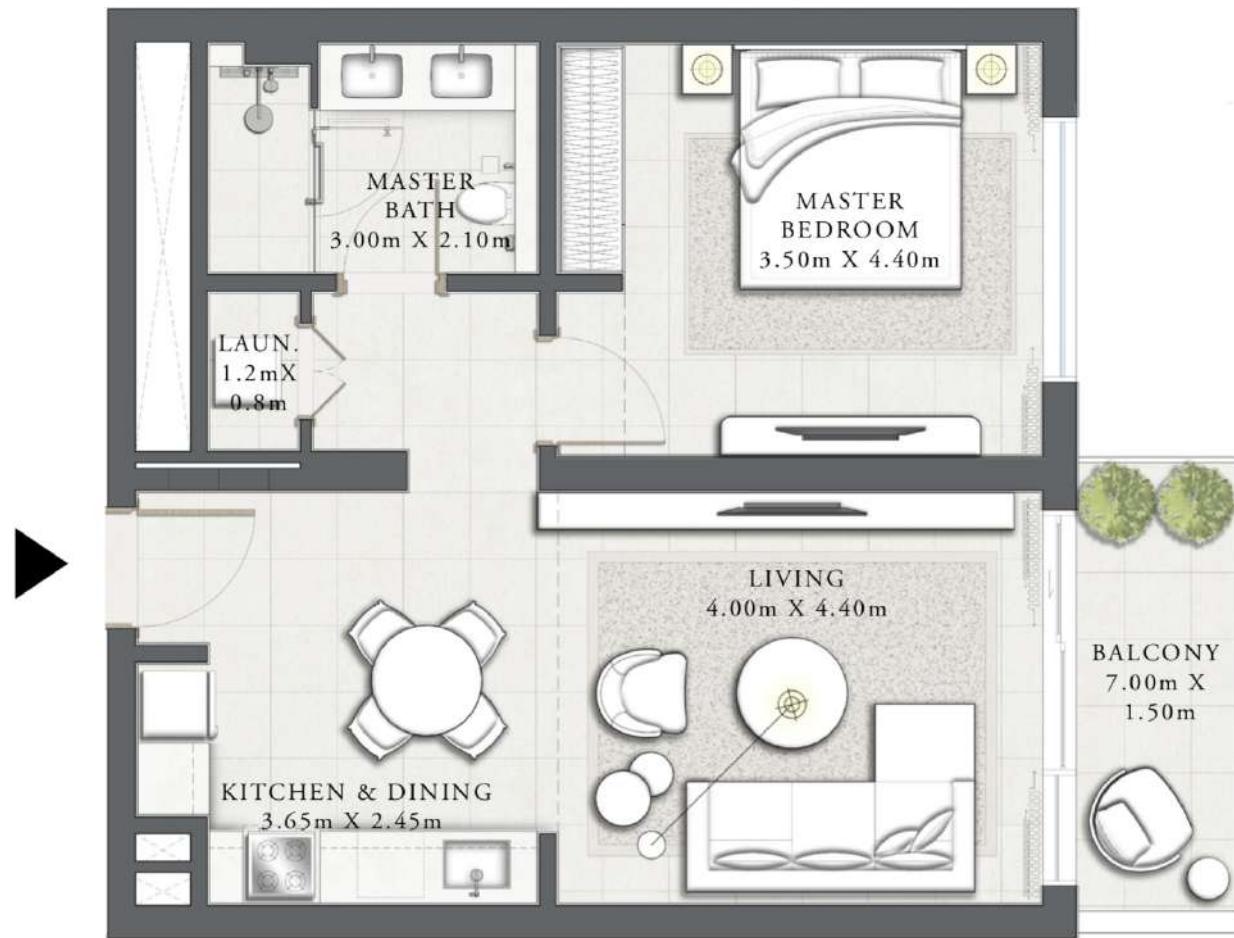


+971 (4) 245-6588

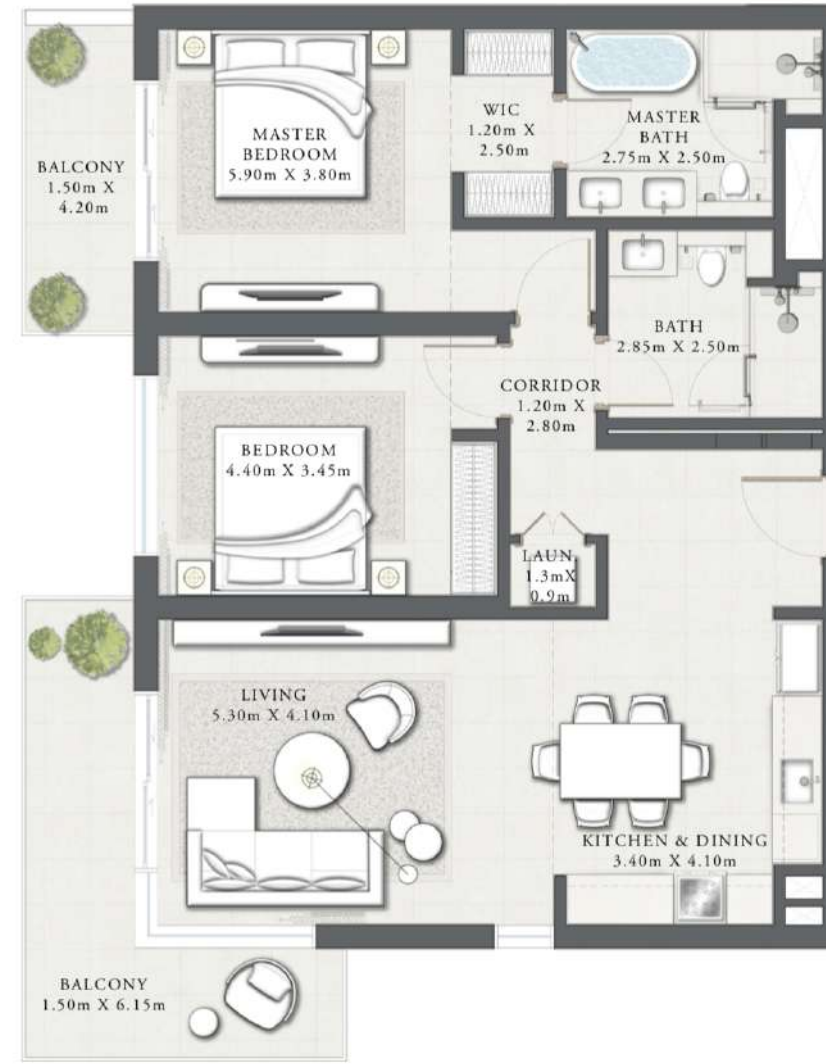
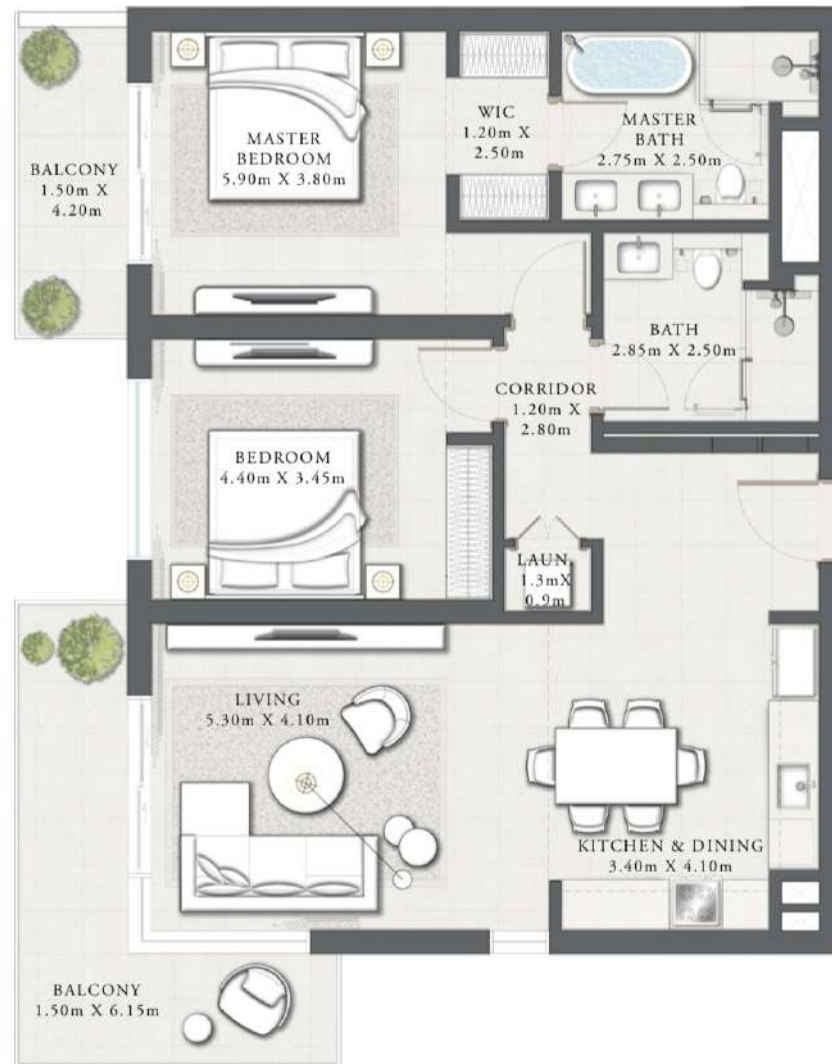
Layouts of the apartments with 1 bedroom



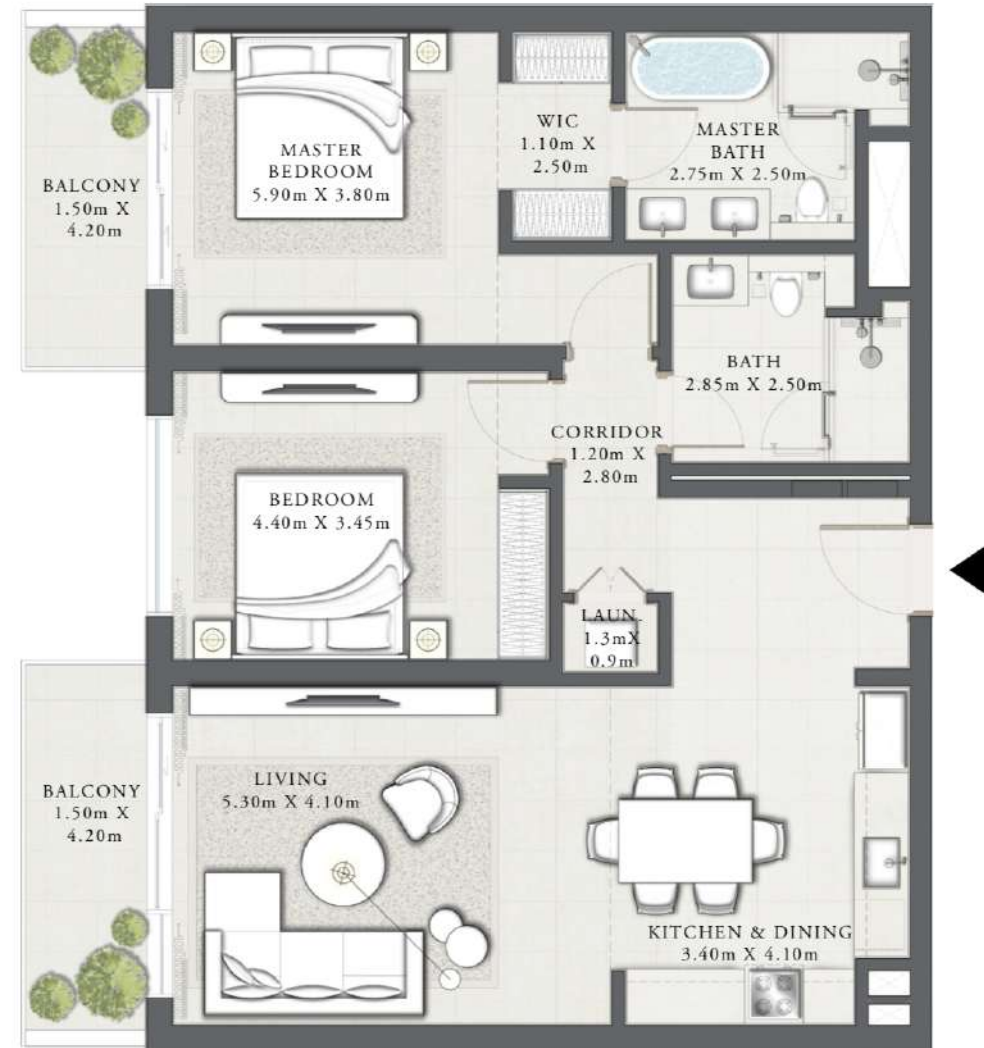
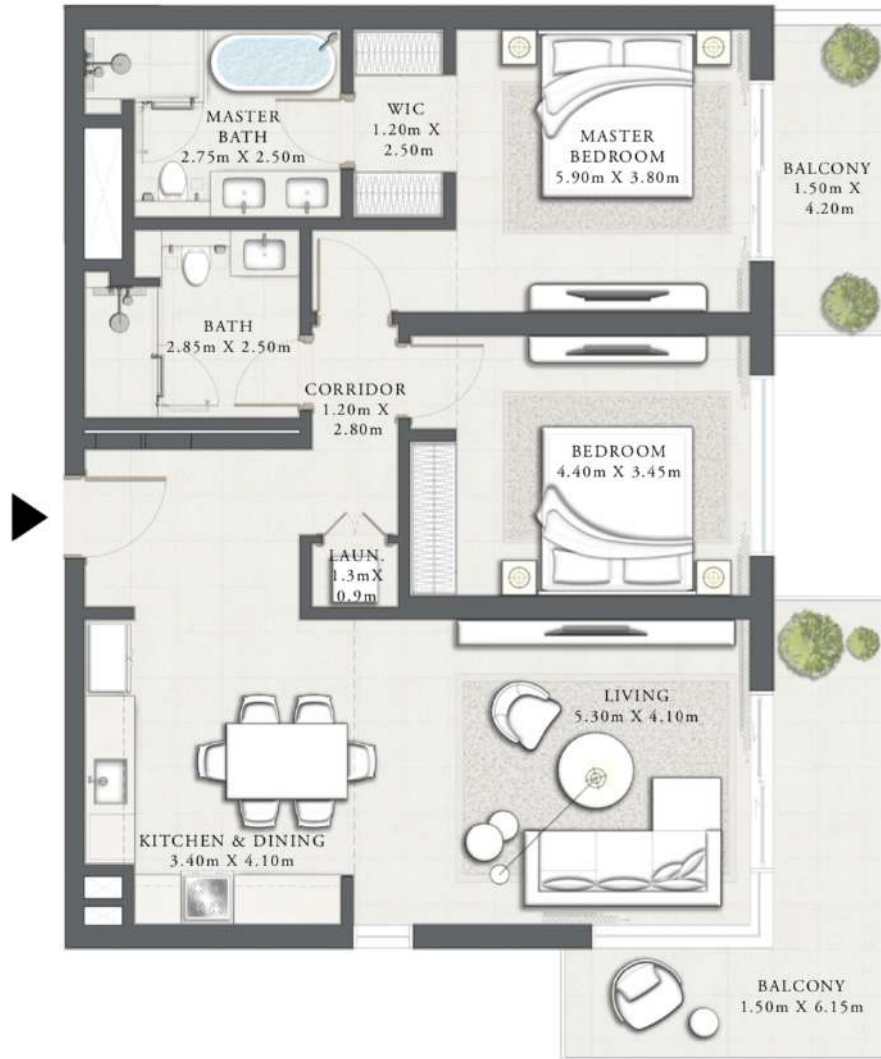
Layouts of the apartments with 1 bedroom



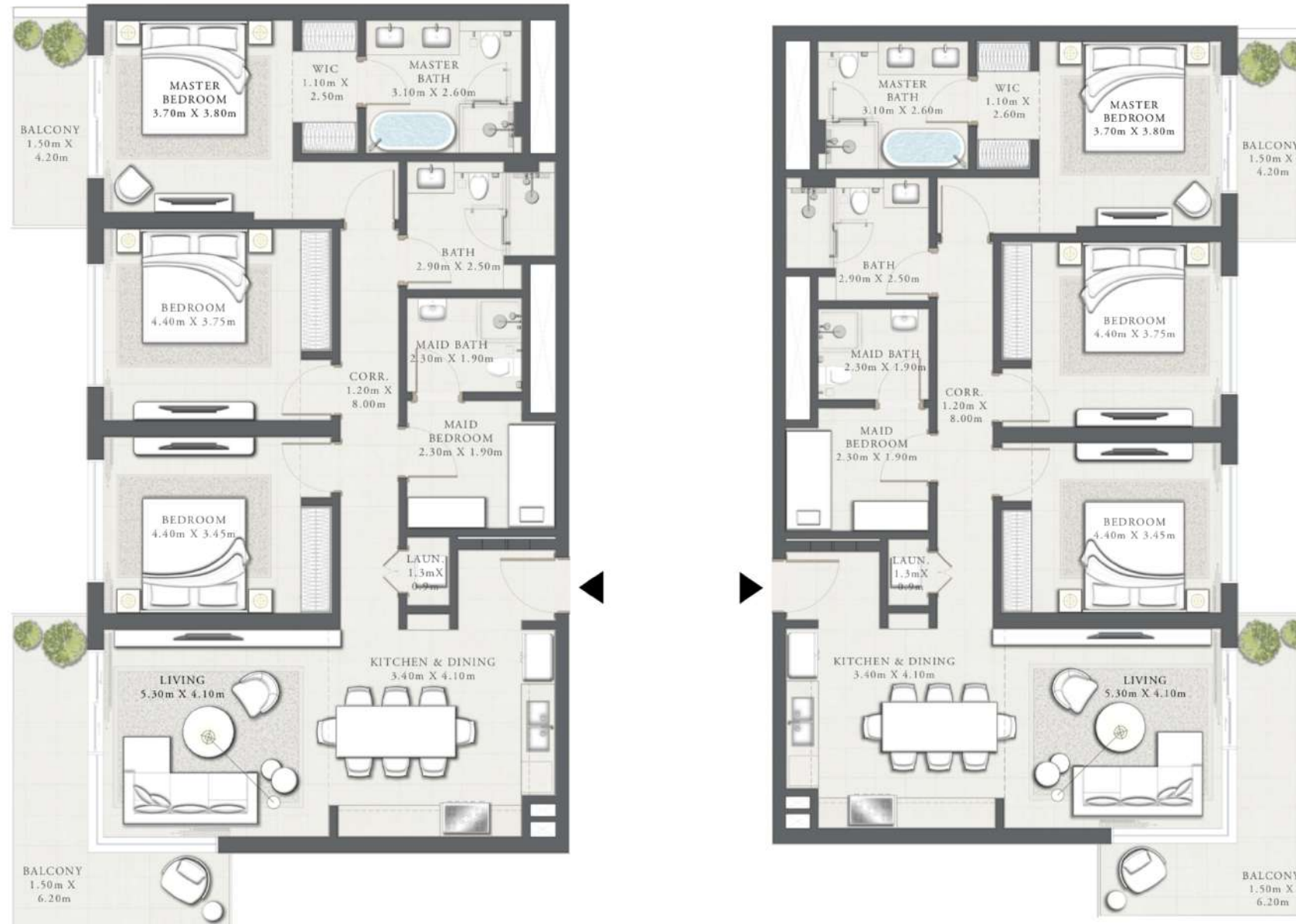
Layouts of apartments with 2 bedrooms



Layouts of apartments with 2 bedrooms



Layouts of apartments with 3 bedrooms



Townhouse layout



Townhouse layout



SEASCAPE

RASHID YACHTS & MARINA



500m swimming pool

Take a dip in the 500-meter canal pool surrounded by palm trees, or spend the day under the warming sun on one of the sun loungers.



+971 (4) 245-6588

SEASCAPE

RASHID YACHTS & MARINA

Pool



+971 (4) 245-6588

SEASCAPE

RASHID YACHTS & MARINA

Modern gym

The gym is equipped with modern equipment for comfortable workouts. Panoramic windows offer a view of the territory of the project and the panorama of the sea.

+971 (4) 245-6588

SEASCAPE

RASHID YACHTS & MARINA

The embankment is the heart of the district



The promenade has become the quintessence of the vibrant life of the area with a rich selection of restaurants and eclectic shops for everyday life and special occasions.

+971 (4) 245-6588

The image is a promotional rendering for a marina. In the foreground, the back of a white speedboat with a wooden deck is visible, with a man at the helm and a woman standing at the stern. The boat is moving across clear, turquoise water, leaving a white wake. To the left, a wooden pier with several sailboats moored alongside it is visible. In the background, a modern city skyline with various high-rise buildings, some with green roofs, lines the waterfront. Palm trees are interspersed among the buildings. The sky is a clear, bright blue with a few birds in flight. The overall atmosphere is one of luxury and modern urban living.

SEASCAPE

RASHID YACHTS & MARINA

Yacht bay

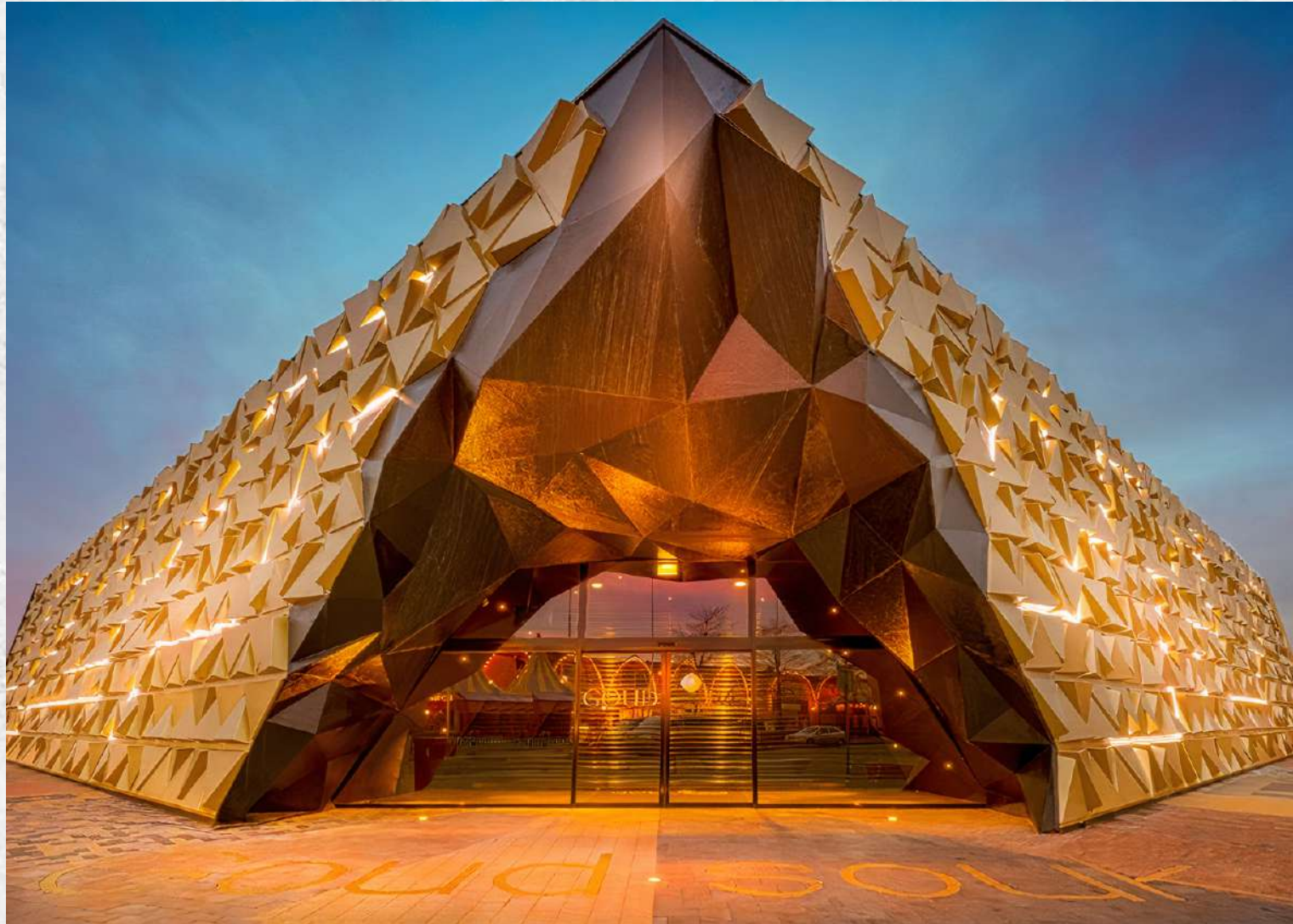
Inside the area there are 430 berths for yachts up to 100 meters long, where you can leave the yacht for one night, a season or a whole year.

+971 (4) 245-6588

SEASCAPE

RASHID YACHTS & MARINA

Center of the new gold market



The center of the new gold market is a 7-minute walk from the project. This traditional market has hundreds of shops offering mostly gold jewelry, but silver and gemstones in intricate Arabic and Indian styles are also available.

+971 (4) 245-6588

SEASCAPE

RASHID YACHTS & MARINA



Mina Rashid Marina

Mina Rashid Marina is a 10-minute drive away. The Mina Rashid Seaport in Dubai has recently become a giant regional center for maritime and water sports.



+971 (4) 245-6588

SEASCAPE

RASHID YACHTS & MARINA

ANWA
by OMNIVAT

Dubai garden glow park

In 15 minutes there is a truly fabulous place — Dubai Garden Glow Park. The peculiarity of this place is that in the evening the park is completely illuminated, creating the effect of magic. There are also interesting activities for children and shows for dinosaur lovers.

+971 (4) 245-6588

SEASCAPE

RASHID YACHTS & MARINA

RollDXB

Rollerdrome RollDXB

In 10 minutes there is a favorite place for children and adults — the RollDXB rollerdrome. On the playground, under the neon lights, you can learn and practice your skills in a disco atmosphere. Beginners will be able to master skating, balance, stops, turns and other simple elements. As skills improve, various maneuvers and graceful dance moves.

+971 (4) 245-6588

SEASCAPE

RASHID YACHTS & MARINA

Project Developer – Emaar Properties

Emaar Properties is Dubai's largest property development company founded by Mohammed Alabbar in 1997. The company invests in the construction of residential and commercial real estate in the Persian Gulf region. Its portfolio of 14,000 properties includes the world's tallest building, the Burj Khalifa, the Dubai Mall, Burj Views, artificial lakes, landscaped gardens and parks.

+971 (4) 245-6588



The project will be built in the 4th quarter of 2026



+971 (4) 245-6588

SEASCAPE
RASHED YACHTS & MARINA

SEASCAPE

RASHID YACHTS & MARINA

Sign up for a viewing by phone:
+971 (4) 245-6588





Whitewill Real Estate Experts

We sell deluxe, premium and business class property in more than
140 residential developments in Dubai

+971 (4) 245-6588

